

## Install a PC font

Begin by downloading the zipped font. Left-click on the font of your choice and a "save file" screen will pop up. Select the folder into which you want to save the zipped file.

With [WinZip](#), unzip the font. You will need to remember into which folder the unzipped font goes. This is necessary for step 11 below \*\*.

1. Go to the Windows 95/98/NT Desktop



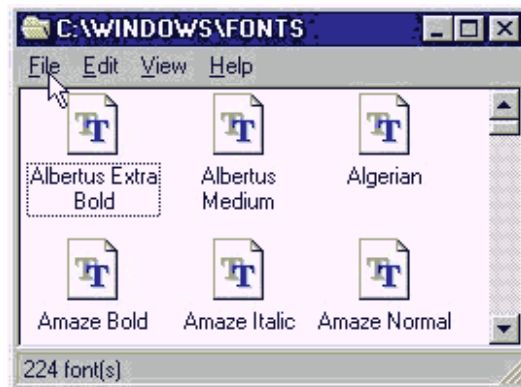
2. Double-click the "My Computer"
3. The "My Computer" window will open.



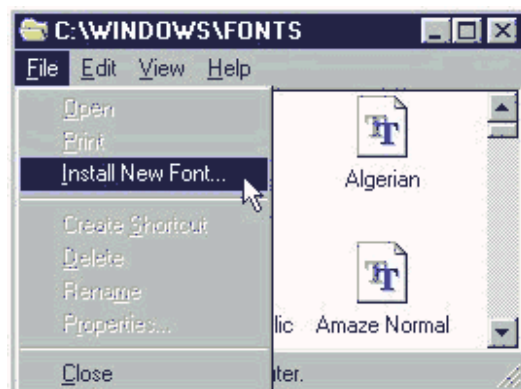
4. Double-click the "Control Panel"
5. The "Control Panel" window will open.



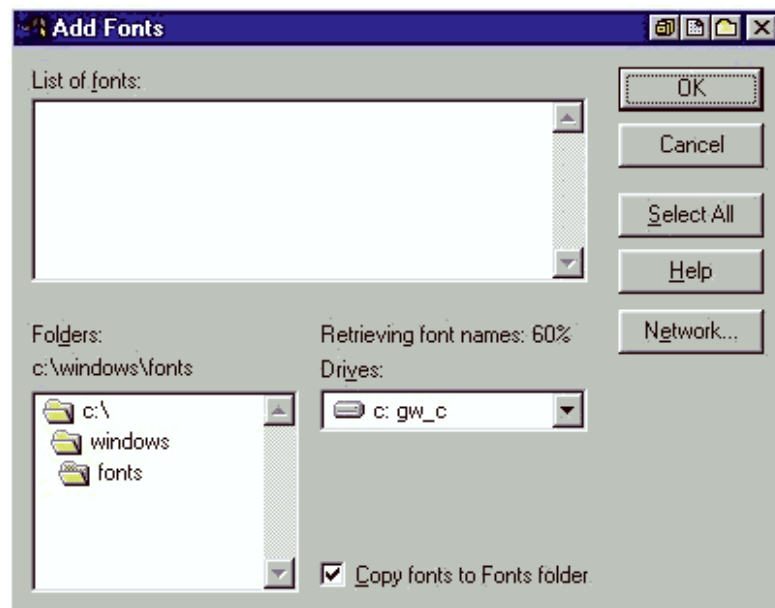
6. Double-click the "Fonts"
7. The "Fonts" window will open showing you the installed fonts.



8. Click on "File" (or press <Alt> <F> at the same time) and when the pop-down window appears select "Install New Fonts".



9. The "Add Fonts" will will appear.



10. There will be a white text box labeled "Folders".
11. \*\* Navigate inside the Folders List box (by double-clicking on the c:\) until you find the folder into which you unzipped the font(s).
12. After the fonts are loaded, they will be shown in the white text box labeled "List of Fonts". You can scroll through the "List of Fonts" list box and select the font you want to install. You can click on one font, or select more than one by holding down the control key as you are clicking on each font, or by clicking on the first font, holding down the shift key and clicking on the last font you want installed. You can also click on the "Select All" button.

**Note:** If you try to install fonts which are already installed, you will be presented with a warning window telling you that you cannot install the font unless you first un-install it. This is a harmless warning which allows you to continue with the other fonts by simply pressing the <OK> button.

13. After the font is selected (it will be highlighted), press the OK button.
14. The font(s) will then be installed.
15. When you are done, press the close <x> button on the top right corner of the window.
16. You will be returned to the Fonts window, and the font you've just installed will be included there.
17. You can now close the Fonts window, close the Control Panel, and close the "My Computer" window.

**Note:** Windows 95/98 has a limit of how many fonts can be installed at one time. The limit is about 1100 fonts. Actually anything over 1000 fonts is probably going to cause problems, so make sure to not install more than 1000 fonts.

Also keep in mind that having more than about 300 fonts installed will take away a lot of system resources and slow down the computer considerably.

**If you don't get the "Install new font" option, do the following:**

1. Go to MS-DOS mode.
2. Make sure your in the windows directory (C:\WINDOWS\)
3. Type: attrib +s fonts
4. Press enter
5. Once you arrive at the C:\ prompt again press CTRL-ALT-DEL to reboot the computer.
6. This should enable the "Install New Fonts" option.